

Journey 2026


NAVÉLIA
YACHT CHARTERS



Magia II

Experience A Magical Journey

Family Heritage And Traditions For Ultimate Komodo Boat Trip Experience

25m | 4 cabins | 10 guests

Magia II is a yacht made from Indonesian craftsmanship and materials, ready to take you to experience spectacular Komodo boat trip and beyond. As a tradition that passes from father to son, unique to that region of the world, the teak and wood are crafted to provide comfort and authenticity to the boat.

As a work of love, every fabric, materials, and designs have been thoughtfully chosen around the world: from English family silverware to French wallpapers and Italian lamps, every curated detail will make the guests feel at home. Every island has its culture, traditions and patterns. In our eyes, Indonesia is probably one of the richest nations in the world and hopping on a Komodo boat tour is one of the best ways to experience its abundance of wonders. You will be lucky enough to sail among these outstanding islands.

"To sail and to be at sea is something that I inherited from my grandfather. Our ancestors have been among the craftiest antique dealers and collectors in Italy in the 19th and 20th century. We had the luck to grow up surrounded by wood and beauty. On Magia II, you will find that love and passion we tried to pass on to you, so that you have the most wonderful and comfortable stay in an idyllic environment."

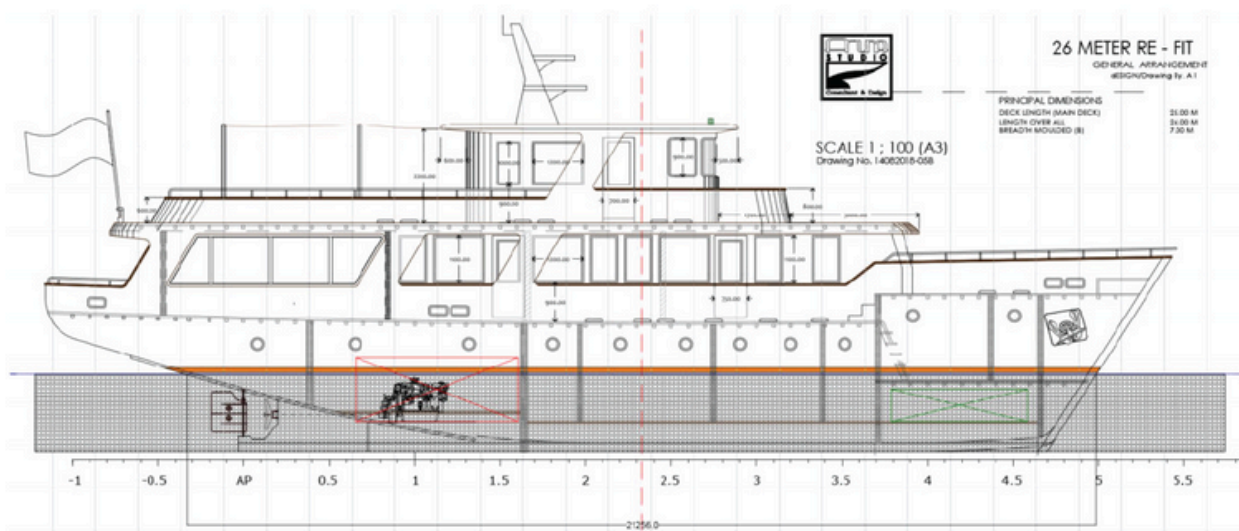
Magia II



Unique Features

Magia II is not as properly saying a sailing boat, yet she is a work of love. She is all made of teak, inspired by the 1960's yachts, the perfect vessel Komodo boat trip sailing the most iconic Indonesian archipelago with its diverse oceans. Magia II design emphasizes that the guests should enjoy ultimate comfort and space, with great attention given to materials, colors, elegance and details.

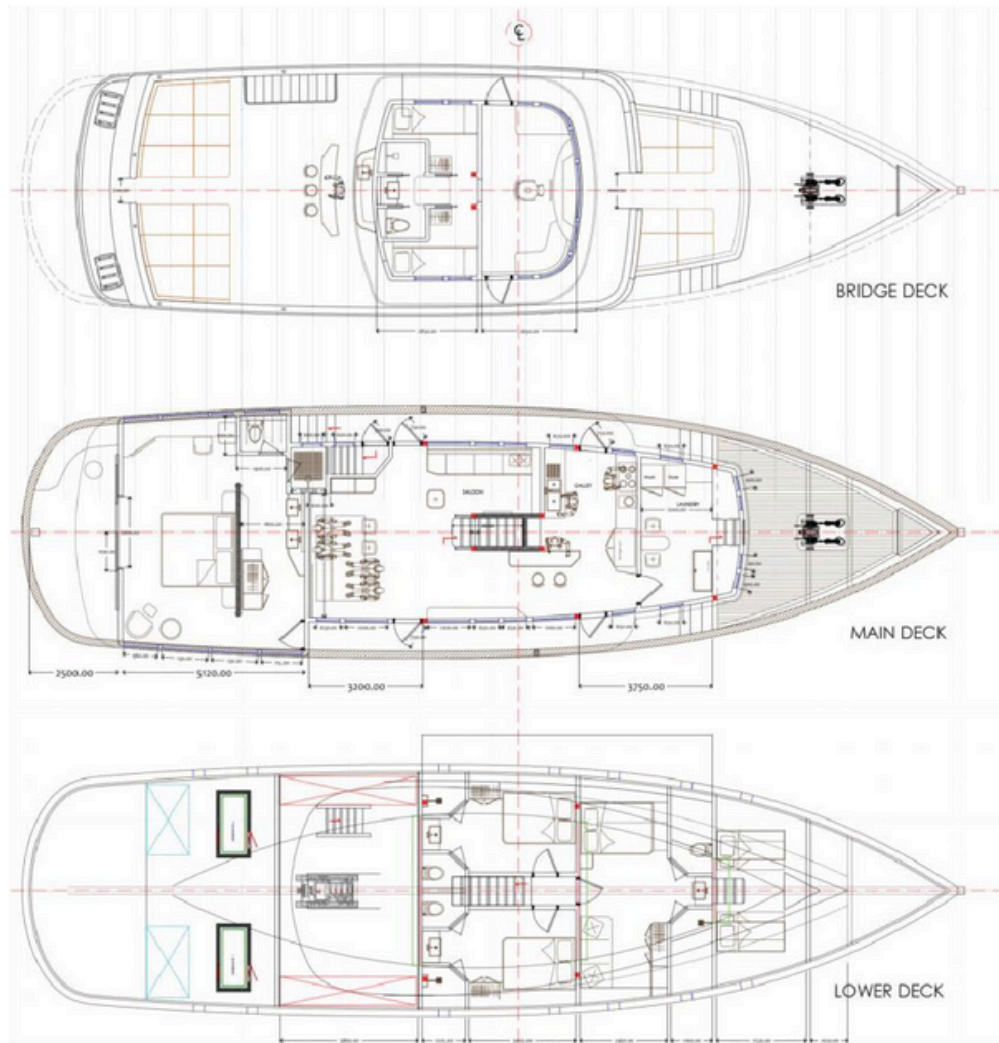
Every item has importance and is meticulous. The master cabin at the aft of the boat offers a splendid panoramic view, including a jacuzzi on the balcony; perfectly equipped to savor the Komodo boat trip and its magnificent scenery. The large upper deck is a perfect area to enjoy your cocktail with friends or family. Experience beyond the best of Komodo sailing trip through the little things shared with your loved ones.



Specifications

Built 2019
Flag Indonesia
Length 26 m
Beam 6 m
Draft 3 m
Speed 8 – 10 Knots
Cabins 1 Master cabin
1 VIP cabin
2 Double cabins
Guests 10

Magia II Deck Plan



The Team

Indonesia's legendary hospitality is alive and well at Magia II, where our team of professional crews have been trained in the art of take care of you, your family and friends.



Classic Design

Magia 2 yacht is not exactly what one would call a sailboat, but she is an elegant labour of love. She is inspired by the yachts of the 1960's and fully made of teak, ready to take you on a spectacular Komodo liveaboard and beyond within Indonesia's phenomenal archipelago, which might just be the journey of your life. Her design is spacious and great attention to detail has been given to the furnishing and material so the experience and service to her guests is at ultimate comfort and delight.

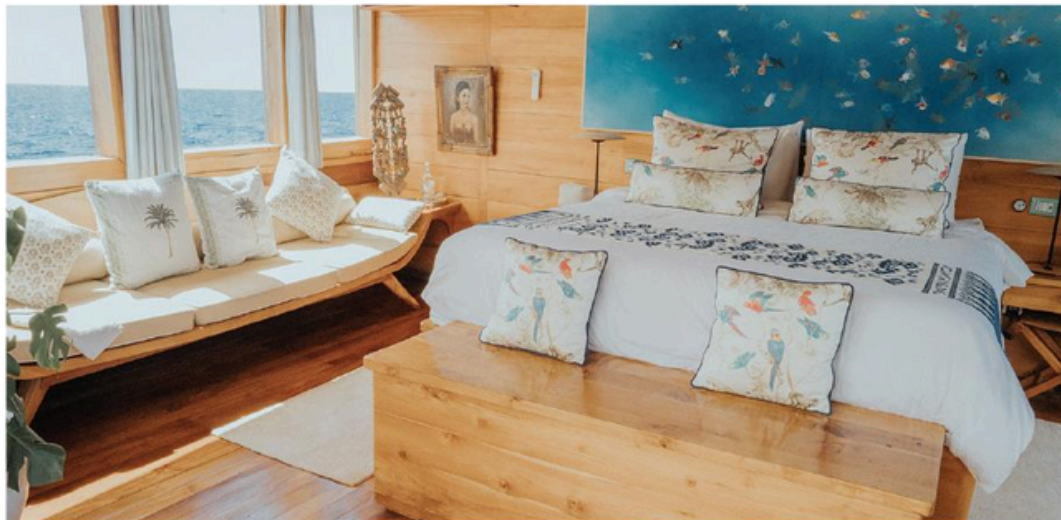


Detailed Interior and exterior

The master cabin at the aft side offers splendid 180 panoramic views that you would allow you to experience spectacular panoramic scenery throughout your Komodo liveaboard experience. It includes a 2 seater jacuzzi on the balcony of the cabin as well as a king bed and a sofa. The 3 guests cabins situated below deck are bright and feature a modern colonial design with white walls and copper faucets. All cabins enjoy premium mattresses and goose feather pillows. All cabins have en suite toilets and showers, and dedicated storage space. Comfort and luxury are guaranteed aboard your Komodo liveaboard experience.

Magia 2 yacht has a luxurious VIP cabin, equipped with a King bed and two single beds, while the other two guests cabins have king beds. The large upper deck is equipped with a well stocked bar and is the perfect area to enjoy juices, cocktails or champagne as you drink in the alluring view where sky and sea meet. There is also a large sultan like day-bed that can host all guests at the same time; one of the reasons why the boat is among the best liveaboard in Komodo for a perfect blend of social. The living room has a separate dining area and a day bed where one can spend some time reading. At the bow of the boat there are two king sunbeds where one can enjoy views of the Indonesian Islands while cruising or simply to sunbathe.

Putri Duyung | Master Cabin

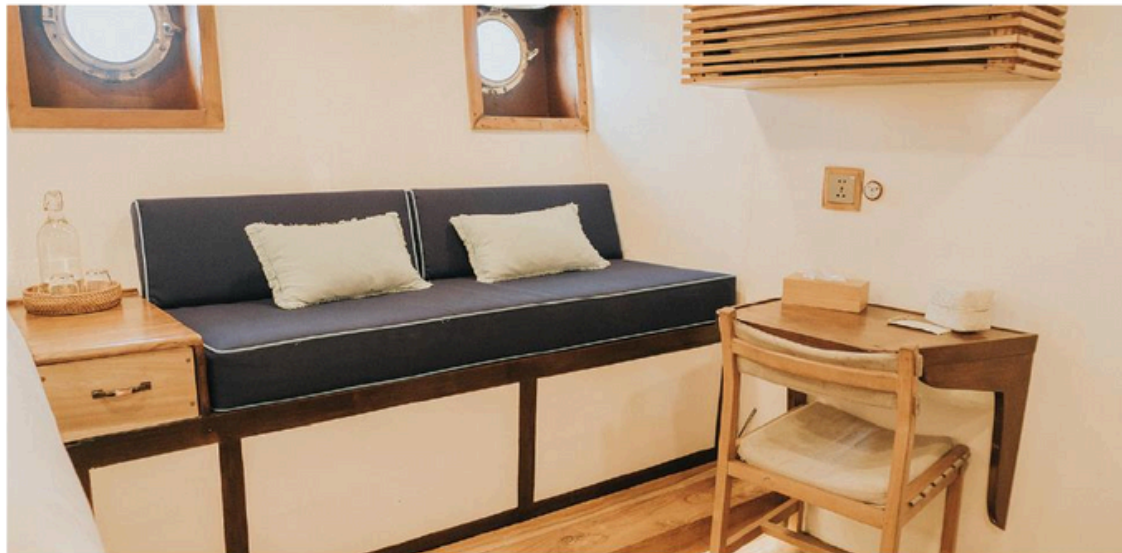




Mola Mola | VIP Cabin



Lumba Lumba | Standard Cabin 1



Kura Kura | Standard Cabin 2



Living Area | Indoor



Living Area | Outdoor



Fine Dining

Our cuisine is carefully crafted by our chef and includes both Asian Fusion and Western dishes. Everything is made from the freshest, local ingredients and served by our diligent staff alfresco under the stars.

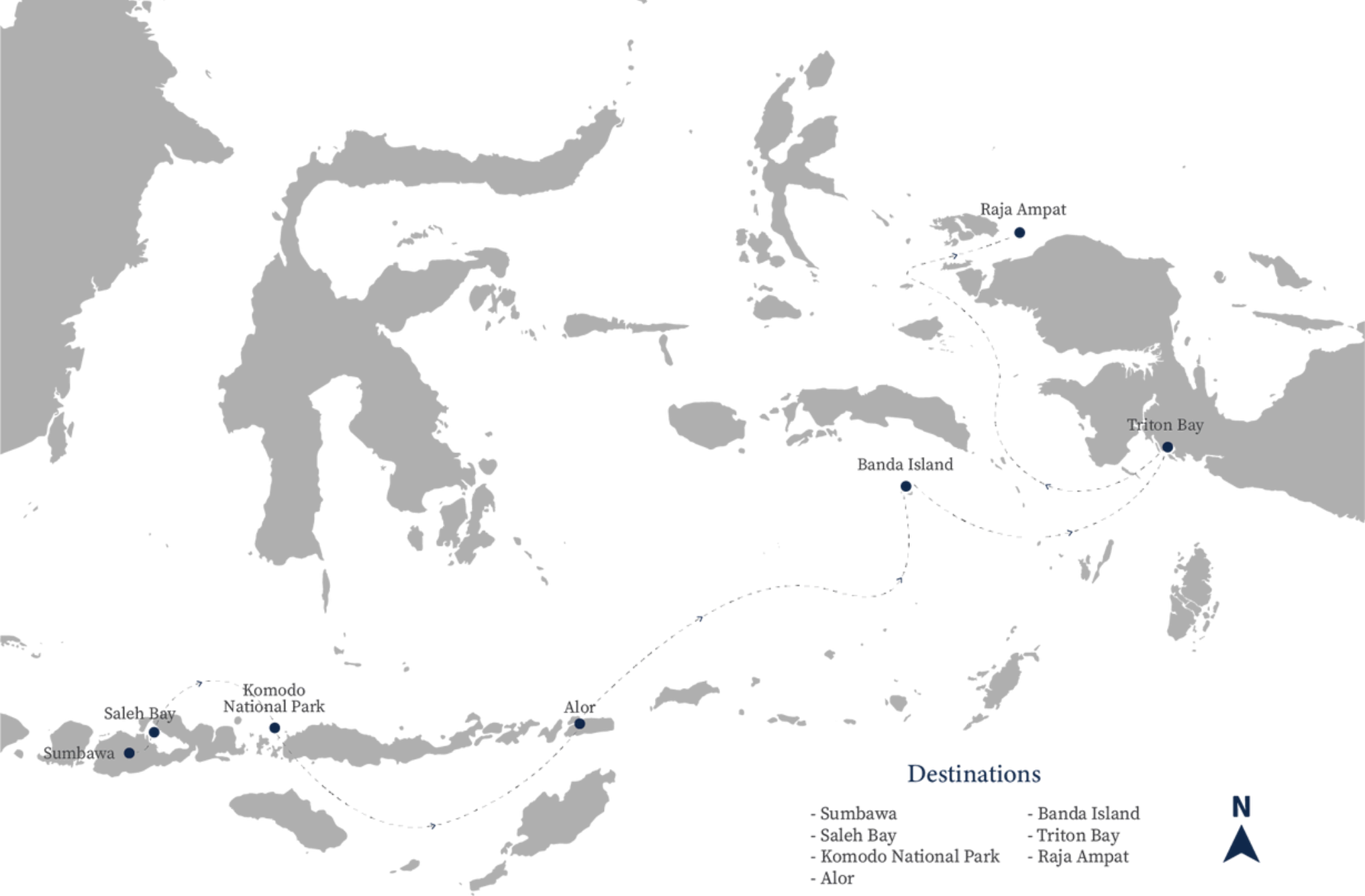


Set Sail To The Remote Islands Of The Indonesian Archipelago

Destinations

Indonesia is the ideal destination for those who love to cruise the ocean. As the world's largest archipelago, there is four times more water than land, so it makes sense to get wet to see the best of this beautiful country as it is best seen from the deck of a boat. Cruise Komodo from May to October, Banda Islands in April and November and Raja Ampat from December to April.





Sumbawa

An exploration of the different Indonesian islands

Sumbawa lies in the Lesser Sunda Islands. This chain starts in Bali and ends in Tanimbar. In the middle you will find laid back Sumbawa Island. Indonesia is the country with most volcanoes is part of the Pacific Ring of Fire. 32 of Indonesia's 147 volcanoes are in Lesser Sunda Islands. It is part of the world's ring of fire. Here on the little known island of Sumbawa stands Mount Tambora , a majestic Satonda island with its marine lake in the middle of the island, as well as Sangeang Api standing still in the middle of blue sea.

Sumbawa charter season is from April to Sept.
Sailing Sumbawa \$5.900 / Nights





Saleh Bay

The largest bay in West Nusa Tenggara

There is no better way to wake up than to have a cup of morning coffee surrounded by the beauty of Saleh Bay scenic landscape : dramatic towering Tambora Volcano, inhabitant islands, fisherman bagan net surrounded by crystal clear waters. You may have a chance to swim with the largest fish on earth, the Whaleshark. Be a local by watching buffalo racing as a sign that planting paddy season has come. You can also trek to the historic Tambora Volcano that produced to the largest eruption on earth in modern history and changed the way we life today.

Saleh Bay charter season is from April to Sept.
Sailing Saleh Bay \$5.900 / Nights

Komodo Island

Komodo Tour Discover The Dinosaur-Eque Komodo Dragons

Embarking on a Komodo tour is a privilege – the journey to the remote islands is far but the discovery makes the voyage worth it. Komodo is the common term used for a primarily volcanic chain of islands in the South East of Indonesia. In fact, this is more accurately made up of three main islands: Komodo Island, Rinca Island, and Padar Island that together with a few other islets form over 2,000 square kilometers of protected national parkland.

Dragons and diving are the two main reasons people decide to charter a yacht as one of the most ideal ways to experience the best Komodo tour. One of the principal attractions is the infamous Komodo dragon, the biggest reptile on earth which can reach weights of up to 70 kilograms and grow up to 3 meters in length.

Whether you enjoy scuba diving or snorkeling, exploring the nautical delights of the region is a must. Coral gardens, plankton rich waters and rushing currents attract many species of fish, from the smallest to the biggest : multicolored fishes, giant pelagics, sharks, turtles, and manta rays while hundreds of varieties of coral thrive providing homes for an impressive array of macro life. Journeying on a Komodo tour is a way to experience the rich and diverse marine wildlife Flores has in abundance.

Komodo Island charter season is from April to Sept.
Sailing Komodo Island \$5.900 / Nights



Alor

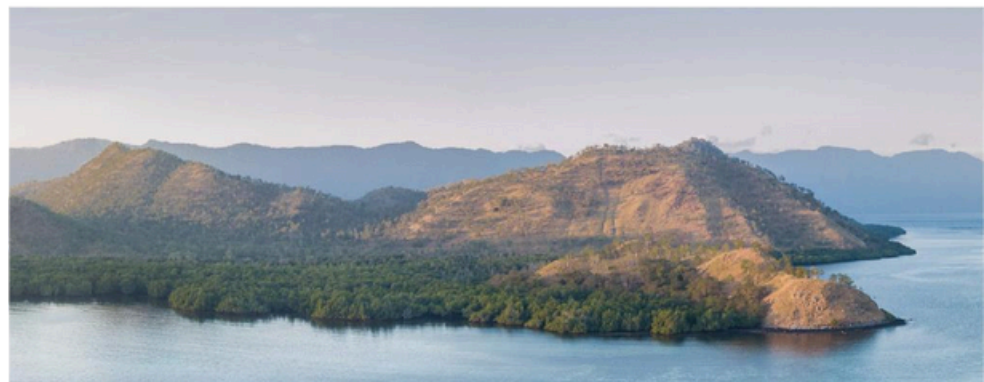
The unspoilt flora of the islands experience of natural beauty.

There are 95 islands surrounding this archipelago encompassing 7,420 km² / 2,865 miles² of land and water. The Pantar Strait is between the islands of Alor and Pantar. The water coming from the Pacific in the north is flowing through this strait to merge with the Indian Ocean in the south. Similar flow occurs in the Komodo Archipelago. With more than 75 dive sites to choose, this area contains 1,200 species of coral reef fish and 500 species of corals. While under water, visibility ranges up to 40m/132 feet in the dry season of July to September.

Discover the world's most colorful, beautiful and densely covered coral reef dive sites on Pura and Pantar. Some sites are known for their beautiful panoramas of dense coral, anemone, and sponge coverage mixed with smaller reef fish. Each site here is diverse with its own topography and vibrant colors scheme including walls, slopes and seamounts. Spend an extra day to travel to Sikka in search for the walrus type mammal, called a Dugong.

Kalabahi Bay and Baengabang Bay are great places for night dives. You can venture out for a night-dive where you will witness a busy nightlife in this volcanic seabed from rare Octopus to the iconic Rhinopias. The Pantar Strait provides us with an opportunity to see several types of pelagic fish given the right tide and moon phase. These can include Eagle rays, Barracuda, Trevally, Tunas, Rainbow Runners and if we are lucky even Mola-Mola, Dolphins, Hammerhead Sharks or Thresher Sharks.

Alor charter season is from April to Sept.
Sailing Alor \$6.200 / Nights



Banda Island

Immerse Your Senses In Great Nutmeg Island's Spices

Banda sea liveaboard isn't just a fascinating combination of natural beauty, a warm local heart, and a palpable and fascinating history; this remote cluster of 10 picturesque islands isn't just Maluku's choice travel destination, it's one of the best in Indonesia. Particularly impressive undersea drop-offs are vibrantly plastered with multicoloured coral gardens offering superlative snorkelling and diving. The central islands – Pulau Neira and Pulau Banda Besar (the great nutmeg island) – curl in picturesque crescents around a pocket-sized tropical Mt Fuji (Gunung Api, 656m).

Outlying Hatta, Ai and Neilaka each have undeveloped picture-postcard beaches. And Run, a gnarled limestone island sprouting with nutmeg and cloves, is one drop-dead gorgeous historical footnote. Going on a Banda sea liveaboard is the best way to reach the pristine and hidden areas of the archipelago. Getting to the islands takes time but with a fast-boat service from Ambon (in the dry season anyway) and talk of a new airport, Banda is becoming more accessible and seems set to see more visitors in the near future. So get here now, before everyone else does.

Banda Island charter season is from November to March.

Sailing Banda Island \$6.900 / Nights



Triton Bay

Experience the home of endemic species of Indonesia

Triton Bay is known as a home to endemic species. Endemism in Triton evolved the same way as it has throughout the Bird's Head of Papua. Beginning ten millions years ago shifting tectonic plate caused geological upheavals and formed new island chains across the Indonesian Archipelago. Triton's reef developed into a crossroad for current-borne marine larvae originating from the Banda Sea. Another contributing factor is the tremendous volume of fresh water flowing from the Mainland of Papua into the sea. Most marine larvae cannot survive in low saline environment. Here they survive and flourish.

The indigenous people of Lobo Village believe that the giant Garuda bird once made Kaimana its home. A woman from Warinau Mountain laid 2 eggs. These 2 eggs hatched into one black bird and one white bird. The black bird grew into a giant bird. It is believed that when Garuda set its wings on the sky, it covered the sun above Kaimana. The villagers were afraid of the black bird. One day, Portuguese sailors arrived at Lobo and they shot the black bird, which relieved the entire village. They later built a statue of the Garuda as the reminder that Garuda once lived there. The bones were nowhere to be found. The story of white egg remains unknown. Today, Garuda is the symbol of Republic of Indonesia.

Triton Bay charter season is from November to March.
Sailing Triton Bay \$6.900 / Nights



Raja Ampat

The World's Most Colorful Coral Reefs

Raja Ampat is the remotest location traveled to by MAGIA II and an epicenter of marine biodiversity dubbed by scientists as the “species factory”; The diving here is among the best on the planet and so undiscovered that many of the dive sites are named after the first person to designate it. This location is a record-breaker with more species documented here on a single dive than anywhere else in the world, ever. The name of this region means “Four Kings”; in Bahasa Indonesian, and it comprises over 1,500 islands scattered between the four mainland masses of Misool, Salawati, Batanta, and Waigeo. This is a gorgeous location, and the best time of year to cruise to Raja Ampat is between November and April. Sailing on MAGIA II means easy access to everything this magical destination has to offer. The list is endless, from the diving and snorkeling to the mysterious caves with paintings from forgotten civilizations, hiking the heavily forested interiors with birds of paradise and BBQs on deserted white sand beaches.

Raja Ampat charter season is from November to March.

Sailing Raja Ampat \$6.900 / Nights

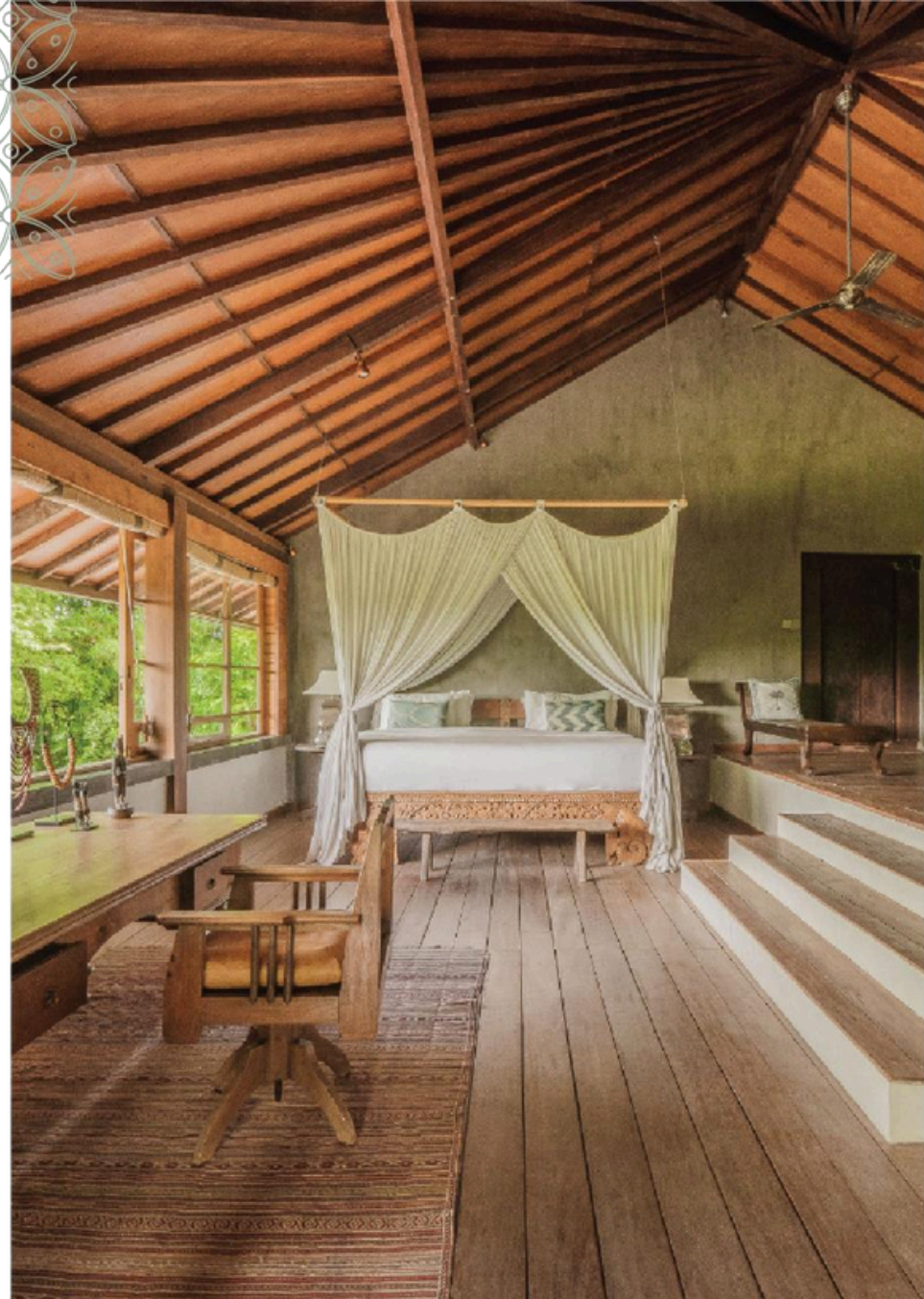


Bali Connecting Experience With Magia Collection

Magia Collection present unique heritage experiences, allowing guest to take time for themselves and to experience homes and vessels that have been uniquely crafted and not replicable to enjoy the magic of beauty and harmony where attention to details and materials have been given the necessary attention allowing one to take time for oneself. The selection of entities that will join the collection is ongoing and will see regular additions keeping in mind the same mantra to deliver a personal experience.

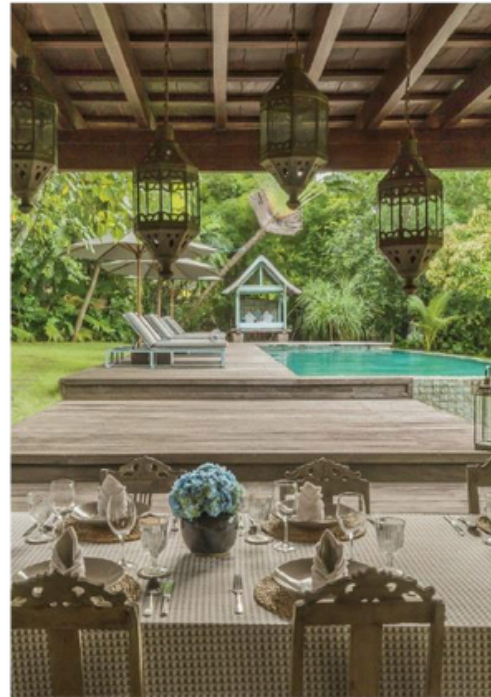
The name Magia combines the elements of magic, intended as the research for something precious, that thing that makes us alive by breathing something that has no color and no taste and by drinking something that has no color and no taste; from this onwards we wish to be amazed by simple things that carry a deep degree of harmony and beauty. The word collection is to emphasize the quest and the research for particular gems, different among them yet aligned to a degree in which they stand for similar principles, making size and value irrelevant as long as they carry the same degree of magic.

As now you have already choose our vessel Magia II for your journey across the sea , we would like to introduce our other collection in the island of the gods "Bali" to complete your journey "Magia de Uma Villa"



Magia de Uma

Inspired by the timeless style of the elegant European farmhouse, Magia de Uma is a 5 bedroom family estate situated in Umalas (Bali). Generously set on 70 are of landscaped tropical grounds, with extensive lawns and mature fruit trees, Magia de Uma is an authentic reflection of Bali's iconic heritage and craftsmanship. Great care has been taken to create a storybook ambience; where indigenous artworks juxtapose modern furnishings ; panoramic rice terrace views go on forever; and Balinese hospitality is alive and well with Magia de Uma's attentive and professional team.



www.magiadeuma.com





info@naveliacharters.com

+62 812-1994-3006

www.naveliaindonesia.com

